



**Asia-Pacific
Economic Cooperation**

2010/EPWG/SEM1/012

Lessons of the 1995 Kobe Earthquake Experience - Pre-Planning of Reconstruction to Avoid Side Effects

Submitted by: Kobe University



JAPAN 2010

**Seminar on Integrating Disaster Risk
Reduction into Disaster Recovery and
Rehabilitation**

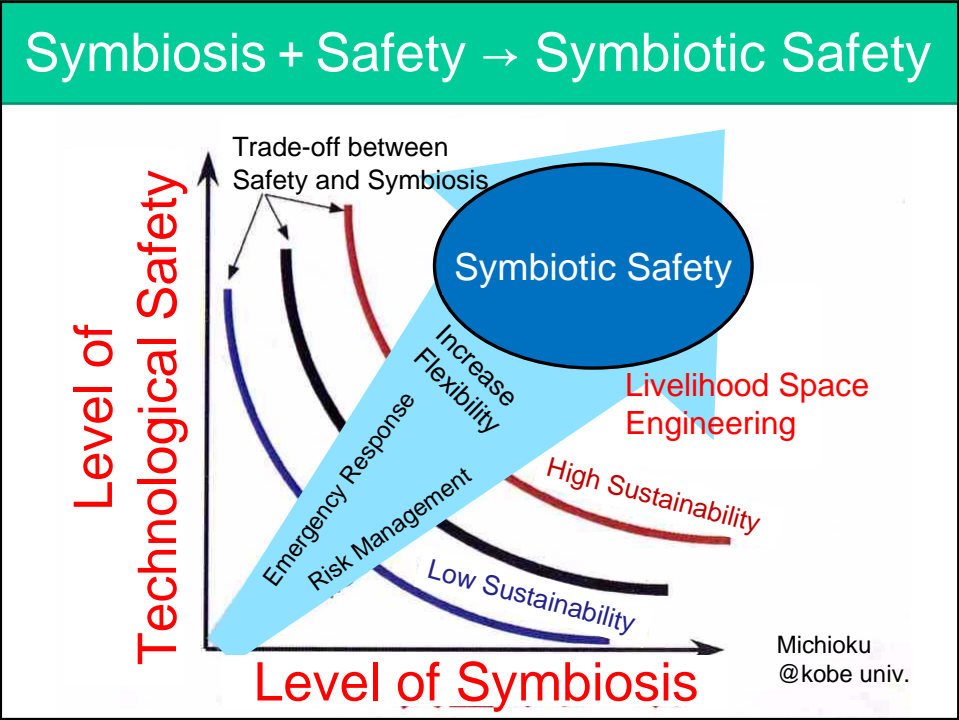
**Sichuan, China
27-29 September 2010**

Lessons of the 1995 Kobe Earthquake experience
Pre-Planning of Reconstruction to Avoid Side Effects

Ahikiko Hokugo, Professor, Ph.D
Research Center for Urban Safety & Security
Kobe University

Lessons of the 1995 Kobe Earthquake experience
Pre-Planning of Reconstruction to Avoid Side Effects

Ahikiko Hokugo, Professor, Ph.D
Research Center for Urban Safety & Security
Kobe University



What is Symbiosis

- The symbiosis is the association on the part of the two or most individual ones of species different with the purpose of to receive mutual benefit for all of them.
- In this case,
Symbiosis means **living together with nature** and also means **living together with different social segments of communities**.
- **True Symbiosis** must be provided with safety.

What is Technological Safety

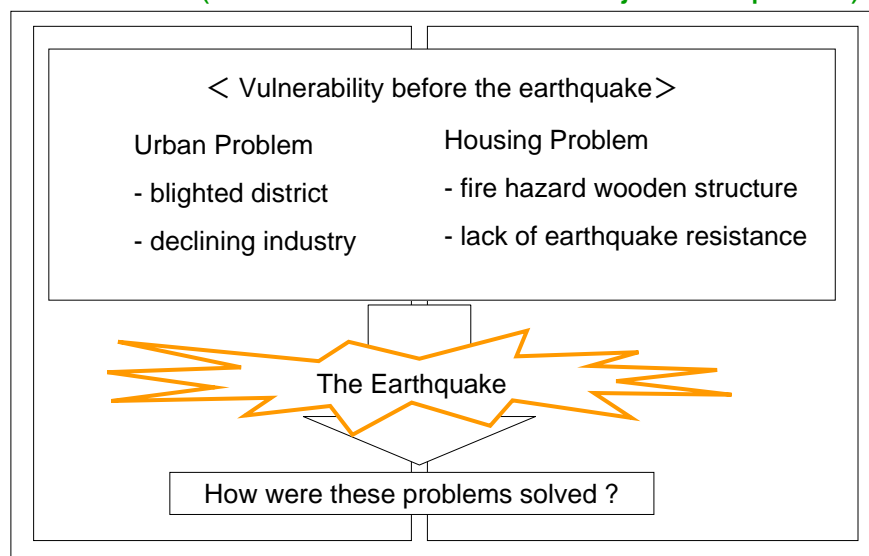
- Safety oriented technology **without thinking of livelihood space and community activities**.
- **The true technological safety** is symbiotic, but conventional technological safety is not symbiotic.

Side Effects of **Limited Problem Solving Measures** for Reconstruction

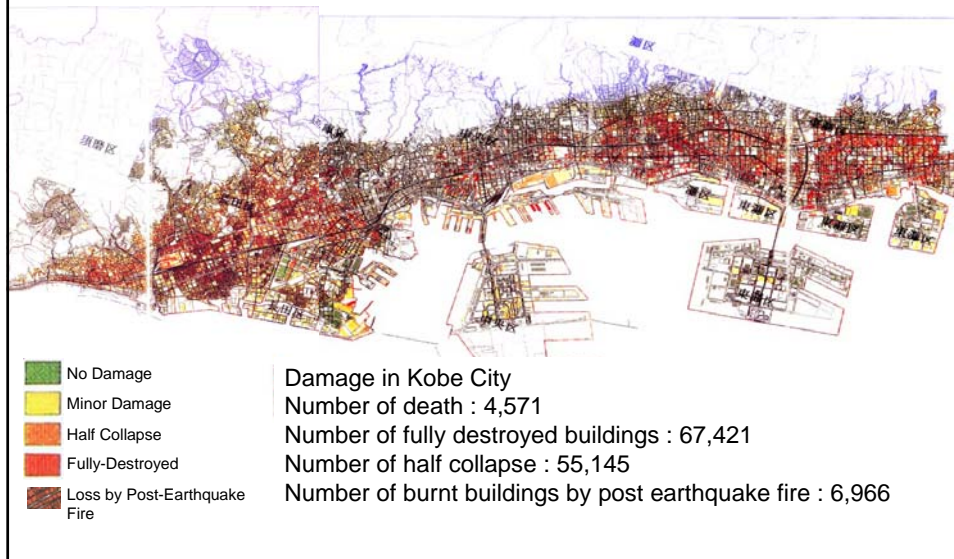
- **Technological Safety Limited** Problem solving Measures
 - Old-fashioned Technicism in Civil Engineering
 - Urban Government Paternalism
 - Disaster Prevention Fascist
 - Kicking out poor people and breaking communities ties
- **Symbiosis Limited** Problem solving Measures
 - Unplanned and Economical Way resulted in Crowded Places and unsafe

Case Study : 1995 Kobe Earthquake in Japan

(The Great Hanshin-Awaji Earthquake)



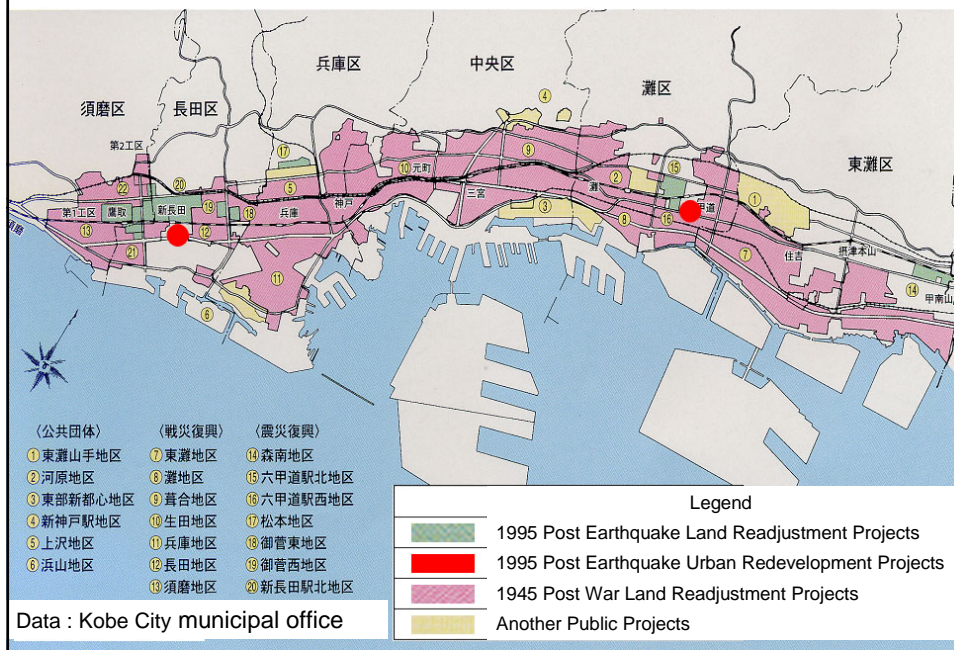
Damage in Kobe City by 1995 Kobe Earthquake



Reconstruction from the 1995 Kobe Earthquake

- Urban Reconstruction
 - Urban Redevelopment Projects in Central Downtown Area
 - Land Readjustment Projects around Central Downtown Area
- Reconstruction of Housing
 - Provision of Public Housing for Poor People in Remote Area (42,137 housing units)

Land Readjustment and Urban Redevelopment Projects Zones in Kobe City



Example of Post Earthquake Urban Redevelopment Projects

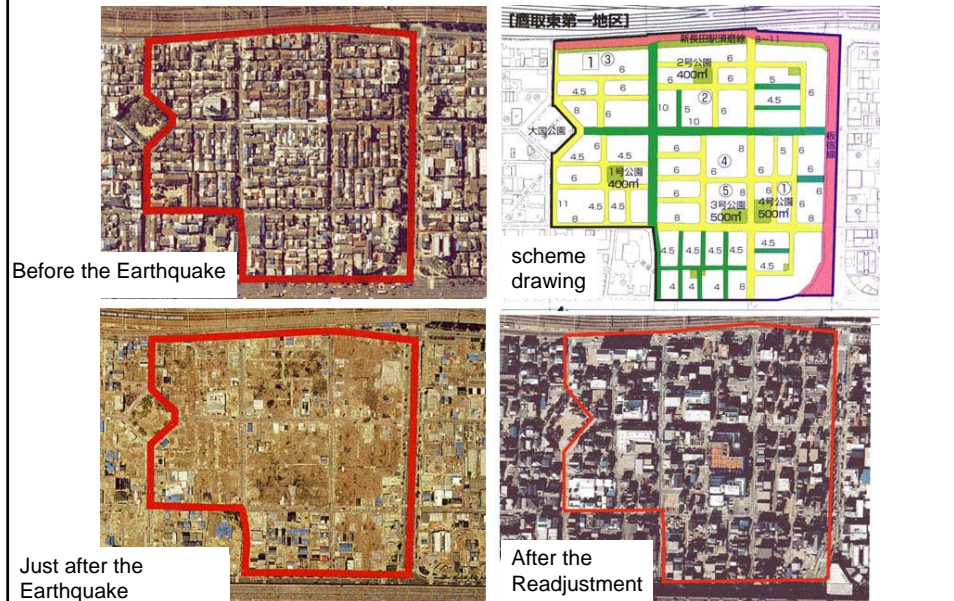


Area : 20 ha Population : 4,500 Housing units : 3,000
(composite picture of the project which is still under construction)

Data : Kobe City municipal office

Example of Post Earthquake Land Readjustment Projects

Data : Kobe City municipal office



Example of Provided Post Earthquake Public Housing Complex in Remote Area



Advantages and Disadvantages of the Reconstruction

- Urban Redevelopment Projects and Land Readjustment Projects
 - Contribute to Urban Fire Safety and Rescue Service
 - Not enough common consent but urgent intervention
 - Not for the affected poor people but for the Renovation of blighted districts
- Provision of Public Housing
 - Safe and sufficient space
 - Relocation of poor people and destroy the community of original district

Lessons of the 1995 Kobe Earthquake experience

- Out of date statutory project procedures resulted many side effects (Disadvantages of the Reconstruction).
- But we have had to use these procedures because there were no other way.
- We should establish new statutory project procedures which adapt to the changing social needs before disasters.
- It is also important to consider Pre-Planning for Reconstruction.

Pre-Planning for Reconstruction

- Tokyo Metropolitan Government made an **urban recovery manual** (1997) which was based on the concepts **of pre-disaster planning for post-disaster Reconstruction**.
- **Neighborhood community-training program** for post-disaster Reconstruction
- Implementing projects which follow pre-planning for reconstruction **in advance of disasters**

References

- Eiji Tarumi(垂水英司)、Bridge the Policy Gap from the Growth Phase to the Practical Mature Society (阪神淡路大地震灾后住宅、街区的复兴 - 过渡时期的震灾复兴) <http://www.cqvip.com/qk/98030X/200804/27700943.html>
- Shiozaki Yoshimitsu, Nishikawa Eiichi, Deguchi Toshikazu, Lessons from the Great Hanshin Earthquake, creates kamogawa, 2005.
- Taro ICHIKO, Naoyuki TAKAHASHI, Itsuki NAKABAYASHI, Revision of disaster prevention measures in Tokyo Metropolitan Government - Ordinance revision (2000) and extending to newly disaster countermeasures (like SARS) -, International Workshop on Emergency Response and Rescue, OCTOBER 31 ~ NOVEMBER 1, 2005.
- Itsuki Nakabayashi, Shin Aiba, and Taro Ichiko, Pre-Disaster Restoration Measure of Preparedness for Post-Disaster Restoration in Tokyo, Journal of Disaster Research Vol.3 No.6, 2008