



**Asia-Pacific  
Economic Cooperation**

---

**2016/SOM1/EPWG/024**

Agenda Item: 8.5

## **Recent Major Disaster and Policies Implication**

Purpose: Information

Submitted by: Japan



**9<sup>th</sup> Emergency Preparedness Working Group  
Meeting  
Lima, Peru  
20-21 February 2016**

9th Emergency Preparedness Working Group Meeting

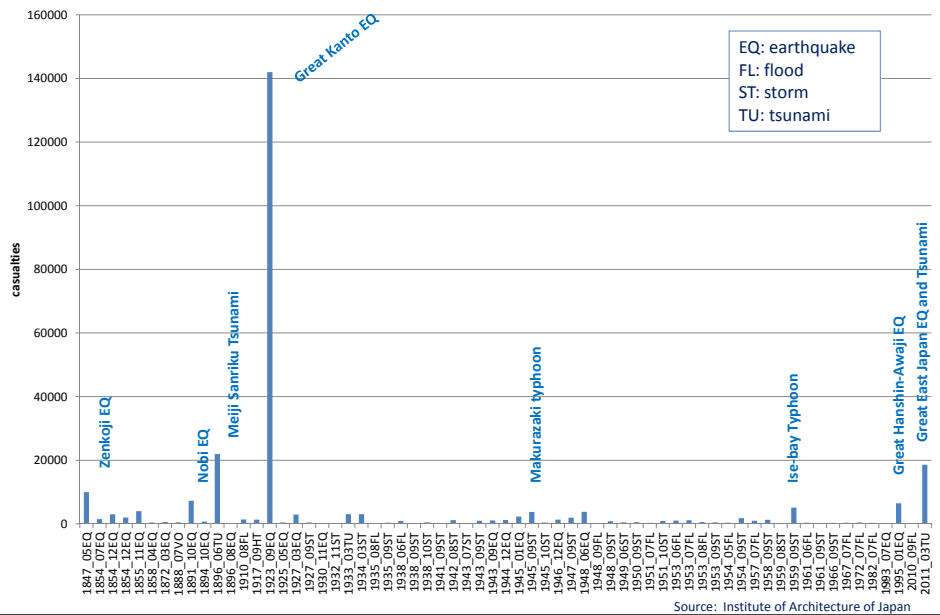
Lima, Peru

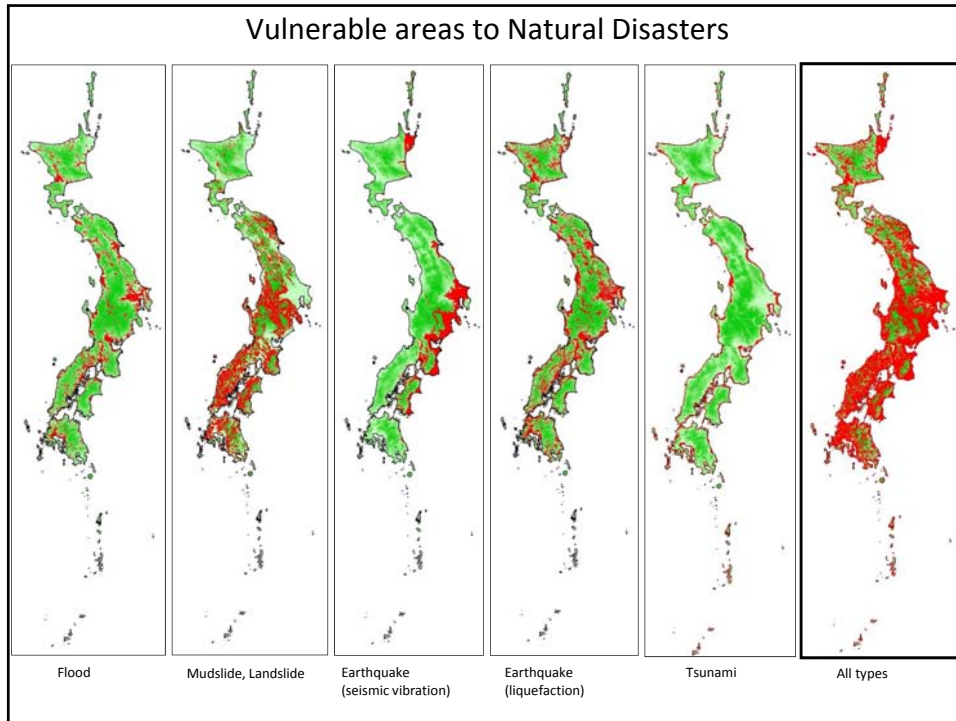
20-21 February 2016

# Recent Disasters in Japan and the policy implications

K.Kondo, Japan

## 1. Large Natural Disasters in Japan





## 2. Major disasters in recent years

- Landslides: Hiroshima prefecture in 2014
- Volcanic Eruptions: Mt. Ontake in 2014
- Flood Disaster: Kanto region in 2015

The map shows the four main islands of Japan with several locations marked by blue circles and callout lines:

- Landslide in Hiroshima (2014):** A callout line points to a blue circle around Hiroshima (広島).
- Eruption of Mt. Ontake (2014):** A callout line points to a blue circle around Mt. Ontake (大飯).
- Flood Disaster in Kanto region (2015):** A callout line points to a blue circle around the Kanto region (関東).

15

## 2-1-1:Landslides in Hiroshima prefecture in August, 2014

Date: August 20, 2014

166 landslide disasters  
-107 debris flows  
-59 slope failures

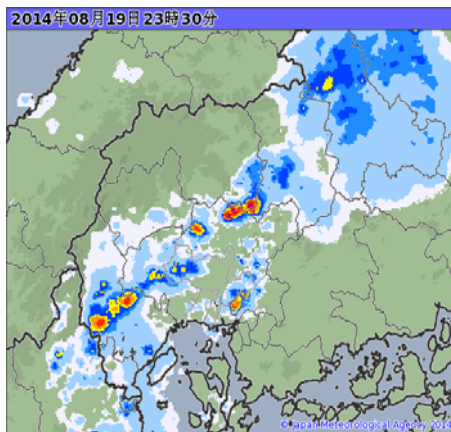
Casualties :

-Number of the killed : 74  
-Number of the injured: 44  
-Totally collapsed houses: 133  
-houses inundated above the floor: 1,302

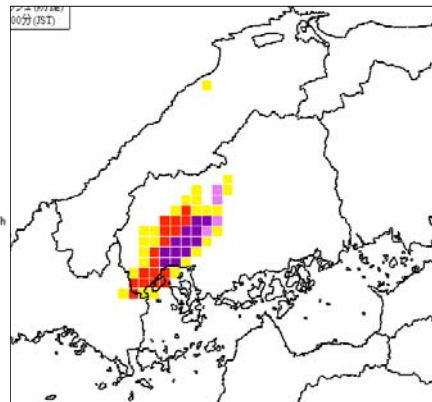


## 2-1-2:Landslides in Hiroshima prefecture in August, 2014

### Meteorological Data



Rainfall Intensity by Radar  
23:30PM, 19 August~2:30AM August 20



Mesh information for sediment disaster alert  
At 3:00AM, August 20

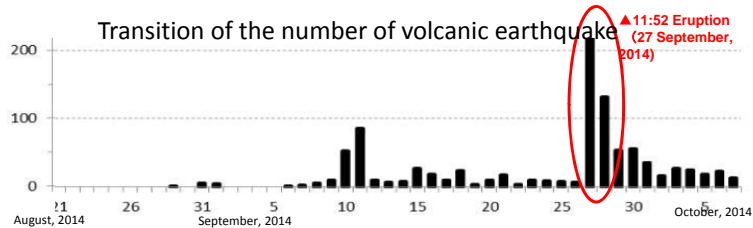
## 2-2-1:Eruption of Mt. Ontake in 2014

- Date: 11:52 September 27 Saturday, 2014
- Last eruption: March 2007
- Casualties: (as of 1 August 2015)
  - Killed:58,
  - Missing:5
  - Injured: 69

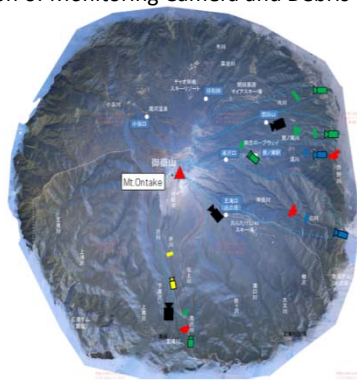


18

## 2-2-2:Eruption of Mt. Ontake in 2014



Installation of Monitoring Camera and Debris Flow Sensor



Explanatory Note	
	Existing Camera
	New Camera(MLIT)
	Wire Sensor(MLIT)
	New Camera (Nagano Pre.)
	Wire Sensor(Nagano Pre.)
	New Camera(MAFF)
	Wire Sensor(MAFF)
	Excavation(Nagano Pre.)
	Sabo Dam(MLIT)

### 2-3-1 : Flood Disaster: Kanto region in September, 2015

▪ Date: September 10-, 2015

▪ Casualties:

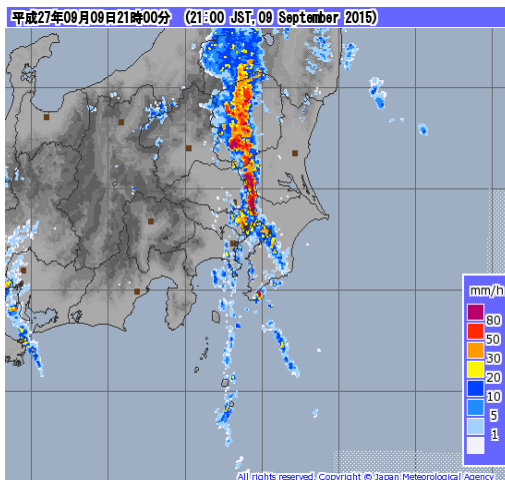
- Killed: 8
- Injured 78

- Totally collapsed houses: 25
- Houses inundated above the floor level: 7,715



### 2-3-2: Flood Disaster: Kanto region in 2015

#### Meteorological Data



Rainfall Intensity by Radar  
21:00PM, 9 September ~ 13:30PM 10  
September



	Emergency Warning
	Warning
	Advisory
	No Warning or Advisory

Status of Announcement of  
weather warnings

### 3. Priorities in DRR policy

- Better policy mix by both structural and non structural measures
  - Information provision by upgrading observation
    - ex. Observation of volcano, precipitation
  - adequate evacuation through awareness raising,
    - ex. Evacuation involving local residents, and better communication for tourists
  
- Climate changes and DRR 4.1
  
- BBB at the stage of ageing and urban shrinking

