



**Asia-Pacific
Economic Cooperation**

2016/EPWG/SDMOF/013


Sowing and Harvesting Water

Submitted by: Peru




**10th Senior Disaster Management Officials Forum
Iquitos, Peru
8–9 October 2016**

21/10/2016



MINISTERIO
DE AGRICULTURA
Y RIEGO



AGRO RURAL
PROGRAMA DE DESARROLLO PRODUCTIVO AGRARIO RURAL

SOWING AND HARVESTING WATER

IMPROVING THE AVAILABILITY, ACCES AND USE OF WATER FOR FAMILY FARMING IN HIGH ANDEAN AND FOREST WATERSHEDS

Iquitos, october 08th 2016

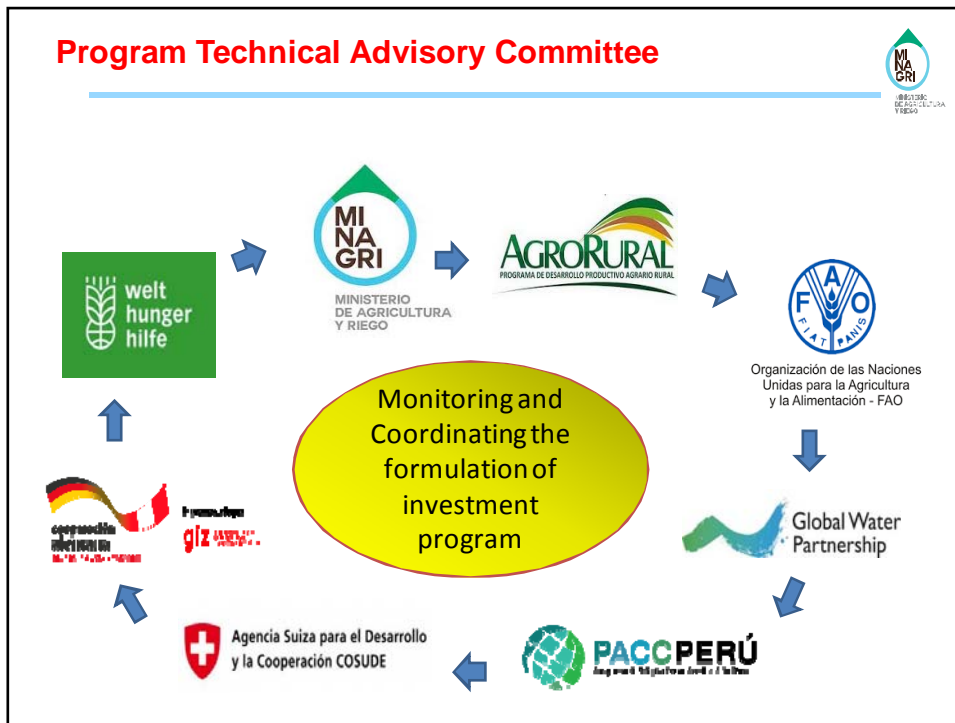
Nelly Paredes Del Castillo
Directora de Gestión de Recursos
Naturales, Riesgos y Cambio Climático

CONTENT

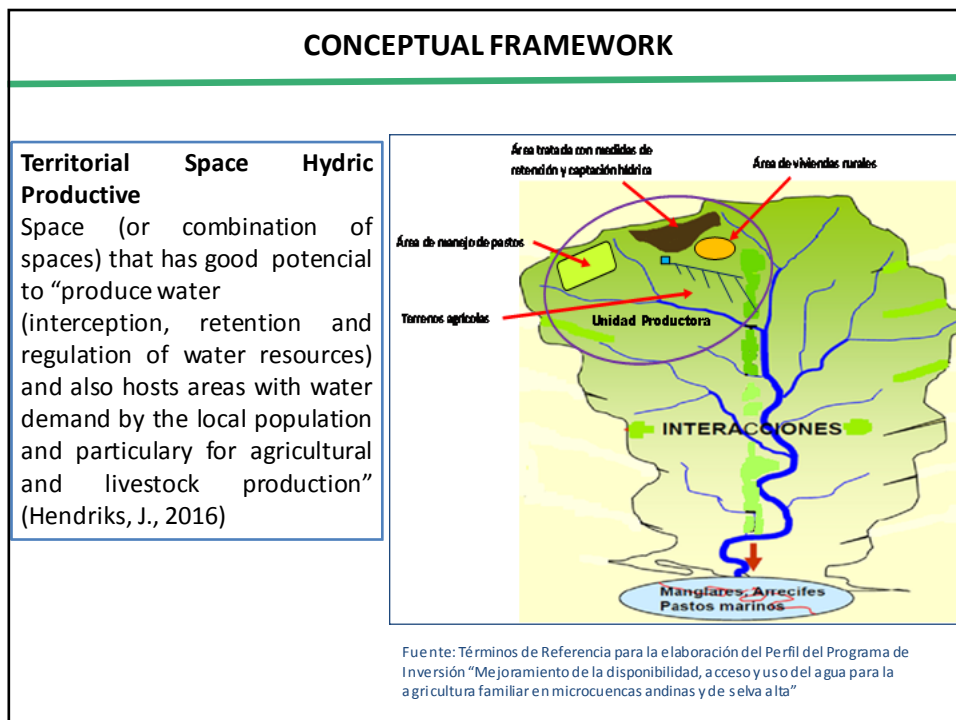
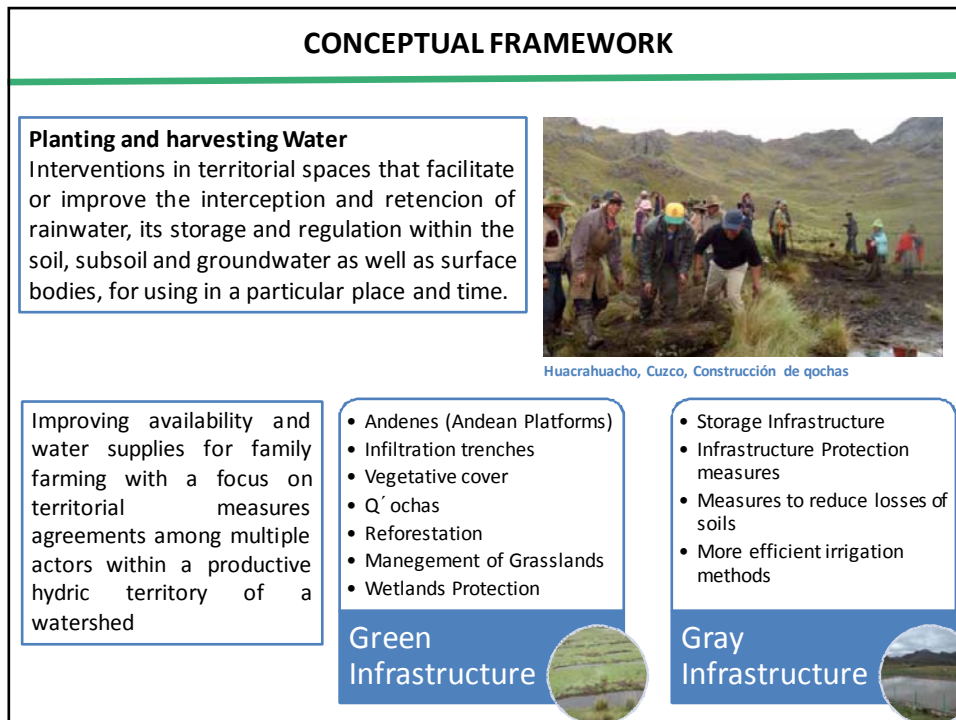


MINISTERIO
DE AGRICULTURA
Y RIEGO

- 1. Framework**
- 2. Concept of the Investment
Public Program**
- 3. Components**
- 4. Evaluation**



1. CONCEPTUAL FRAMEWORK



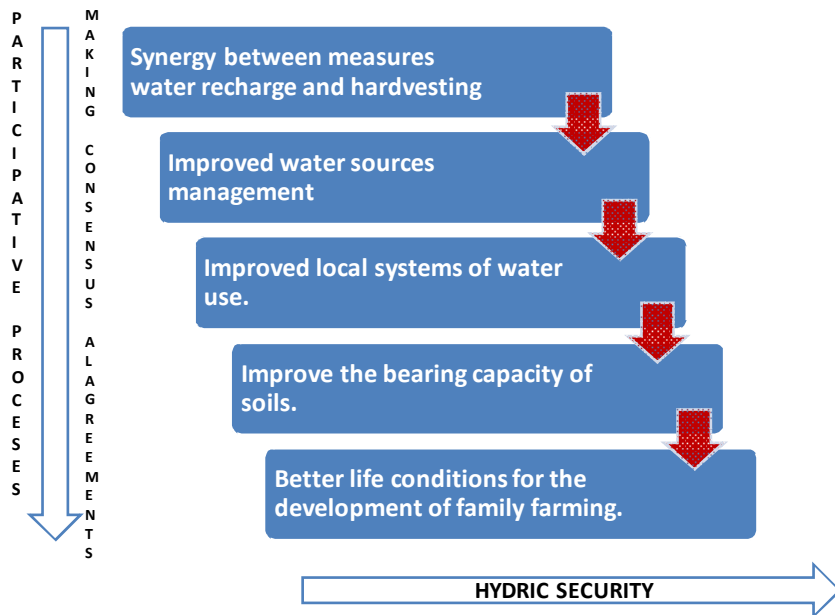
CONCEPTUAL FRAMEWORK




Family Farming

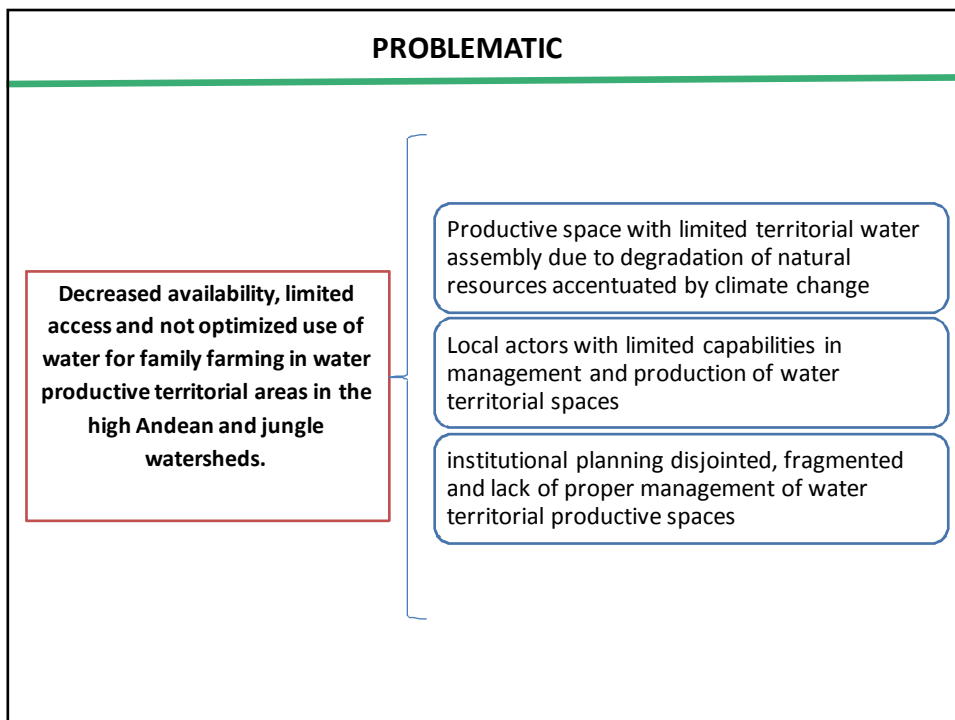
Way of Life and Production, managed by a Family, Whose members are the main workforce. It includes activities such as agricultural and livestock production, forest management, rural industry, artisanal fishing, aquaculture and beekeeping, among other activities . (National Strategy of Family Agriculture 2015-2021. MINAGRI, 2015).

CONCEPTUAL FRAMEWORK





**2. CONCEPT OF
THE PUBLIC
INVESTMENT
PROGRAM**



OBJETIVE OF THE PROGRAM

Increased availability, access and optimized use of water for family farming in water productive territorial areas in high Andean and jungle watersheds



Through the implementation of efficient rainfall water retention and storage both on the surface and in the soil (natural reservoir) interventions.

PROGRAM COMPONENTS

To achieve the objective the Public Investment Program execution raises 03 components:

PRODUCTIVE WATER CONDITIONING IN THE HYDRIC PRODUCTIVE TERRITORY LOCAL (STRUCTURAL MEASURES)

MANAGEMENT AND TECHNICAL ASSISTANCE FOR HYDRIC PRODUCTIVE TERRITORY (NO STRUCTURAL MEASURES)

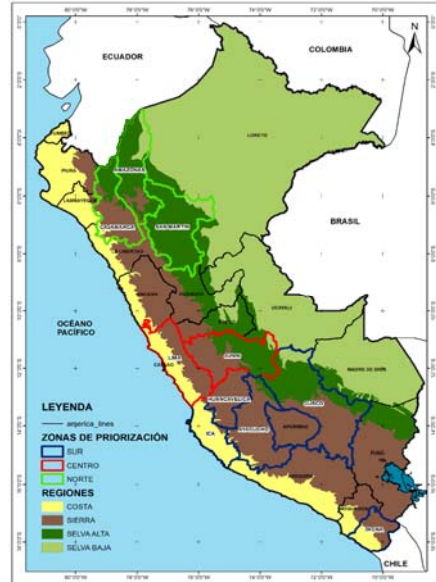
INSTITUCIONAL CAPACITY BUILDING OF LOCAL WATER GOVERNANCE



REGIONAL SCOPE OF THE PROGRAM

The regions selected as area of intervention of the program are the following

	REGION
NORTH	Cajamarca
	Amazonas
	San Martín
CENTER	Junín
	Lima
	Ayacucho
SOUTH	Cusco
	Apurímac
	Huancavelica
	Ica
	Tacna



3. PIP COMPONENTS

TECHNICAL ANALYSIS OF THE COMPONENTS

1. CONDITIONING AND PROTECTION OF WATER TERRITORY PRODUCTION (structural measures)

This component considers the execution-oriented implementation of green infrastructure and gray for productive water conditioning territory, as an adaptation measure to climate change, in an area of 12,000 has.

Nro	Soil Storage	Surface Storage
1	Amunas conditioning	Construction of microreservorios
2	Qochas construction	Construction of irrigation channels adduction
3	Terracing absorption construction	
4	Construction of slow formation terraces	
5	Construction of infiltration trenches	
6	Grassland management	
7	Reforestation	
8	Bofedales protection	
9	Implementation of agroforestry systems	

TECHNICAL ANALYSIS OF THE COMPONENTS



Condebamba, Cajabamba, Cajamarca- Microreservorios

Moyobamba, San Martín - Reforestation



TECHNICAL ANALYSIS OF THE COMPONENTS



Quispillacta, Chuschi, Ayacucho-Qochas

Catcca, Quispicanchi, Cuzco -
Infiltration trenches



TECHNICAL ANALYSIS OF THE COMPONENTS



Chaclla, Huarochiri, Lima –
Grassland management

Pillao, Matao–bofedales protection



TECHNICAL ANALYSIS OF THE COMPONENTS

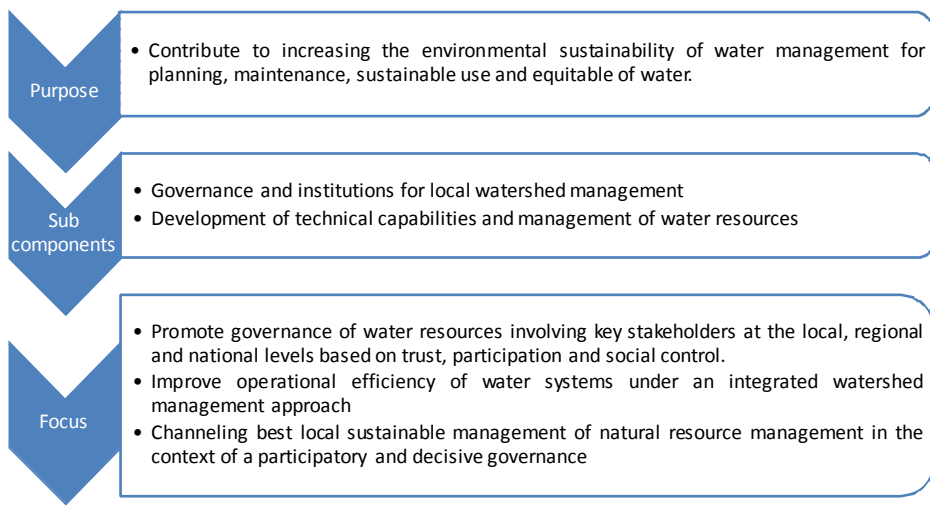
2. MANAGEMENT AND TECHNICAL ASSISTANCE FOR WATER MANAGEMENT PRODUCTIVE TERRITORIES (NO STRUCTURAL MEASURES)

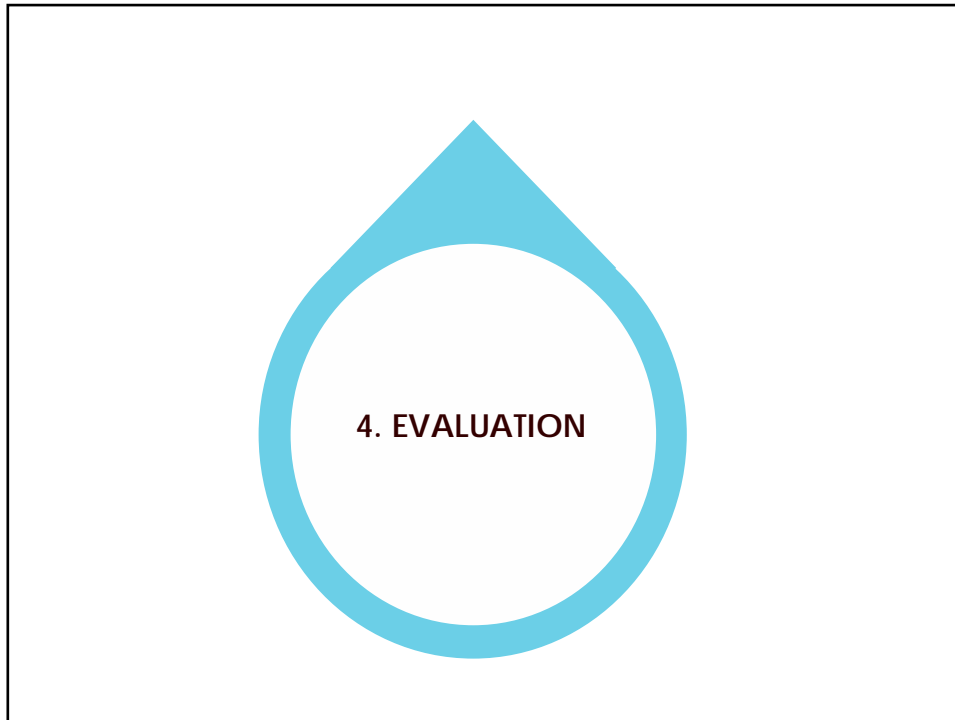
This component considers the implementation of actions and aimed at strengthening and updating of knowledge for productive water conditioning territory activities, which consists of the following:

ACTIVITY	DESCRIPTION
Technical Assistance	Oriented to beneficiaries for implementation of structural measures.
Training	Program of courses for beneficiaries and professional staff.
External experiences	Exchange of national experiences on sowing and harvesting Water (Internships)
Evaluation	Research on Impacts and Effects of Structural Measures of the watershed (Installation and equipment stations and control areas).
Participatory planning	Participatory workshops with beneficiary population. Identification and programming implementation of structural measures.
Baseline	Studies of the Watershed.

TECHNICAL ANALYSIS OF THE COMPONENTS

3. INSTITUTIONAL CAPACITY BUILDING AND WATER GOVERNANCE





EVALUATION OF BENECIARIES

Benefits attributable to the implementation of the Public Investment Program are as follows:

- Conservation and increased water availability ($m^3/year$).
- Increased volumes of agricultural production (t/año).
- Decreased rate of erosion (t/ha/year).
- Increase in timber volume (m^3/ha).
- Landscape- conditioning ecotourism (visits/year).
- Capture of carbone (t/ha/year).
- Flood losses avoided values (S./year).

21/10/2016



MINISTERIO
DE AGRICULTURA
Y RIEGO



MUCHAS GRACIAS
THANK YOU